



US Army Corps
of Engineers®

IERs 4, 6, 7

New Orleans Levees & Floodwalls

Purpose and Need: Provide for the 100-year
Level of the Hurricane and Storm Damage
Risk Reduction System

IER 4: New Orleans Lakefront Levee Phase 1A & 2 of 100-year Level of Protection

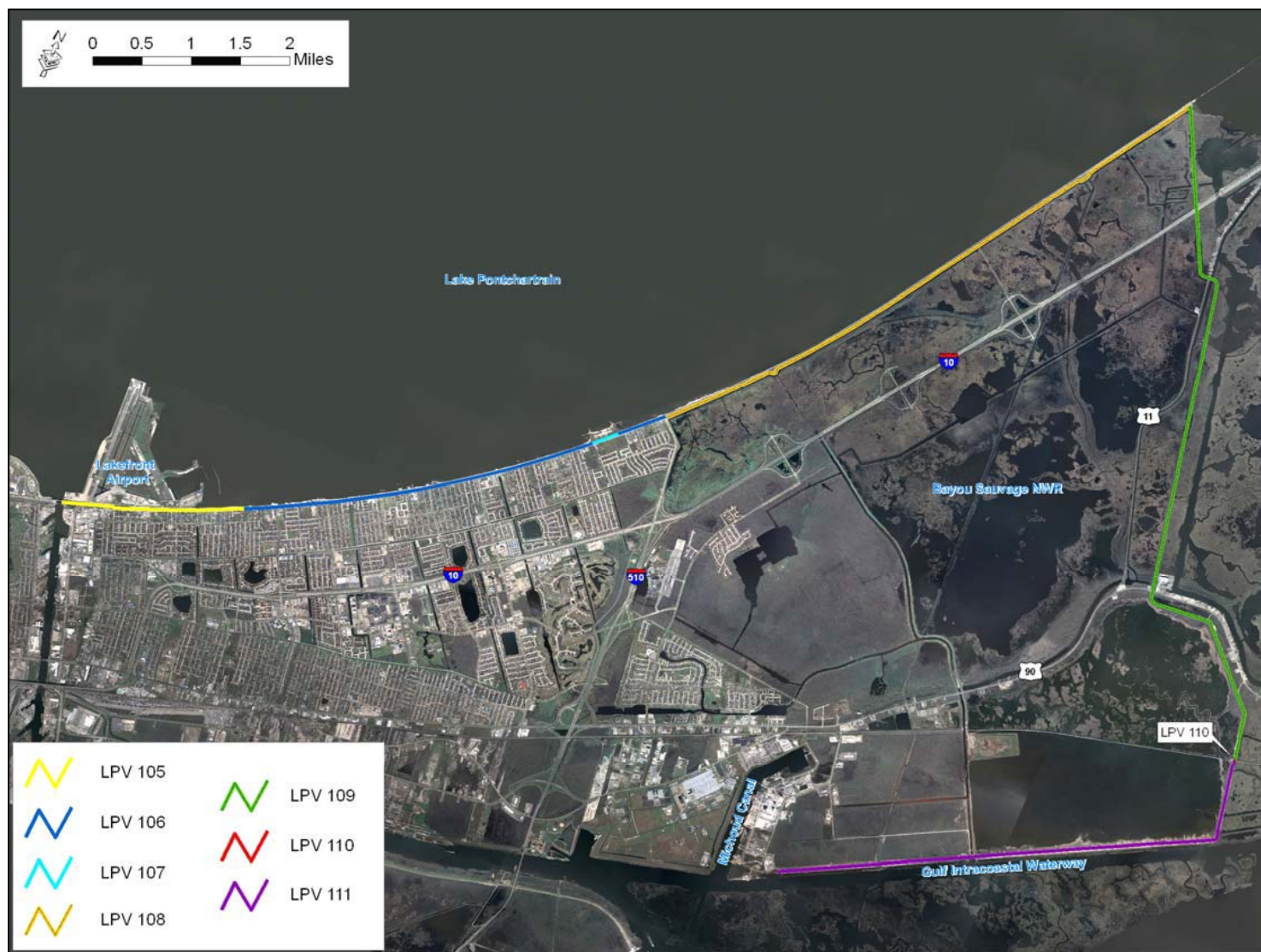


- Modifications or replacement of floodwalls / gates
- Additional embankment work to meet new design criteria
- Raise Road Ramps
- Armoring of transitions & utility crossings



US Army Corps
of Engineers®

New Orleans East Levees IER 6 and IER 7





**US Army Corps
of Engineers®**





**US Army Corps
of Engineers®**

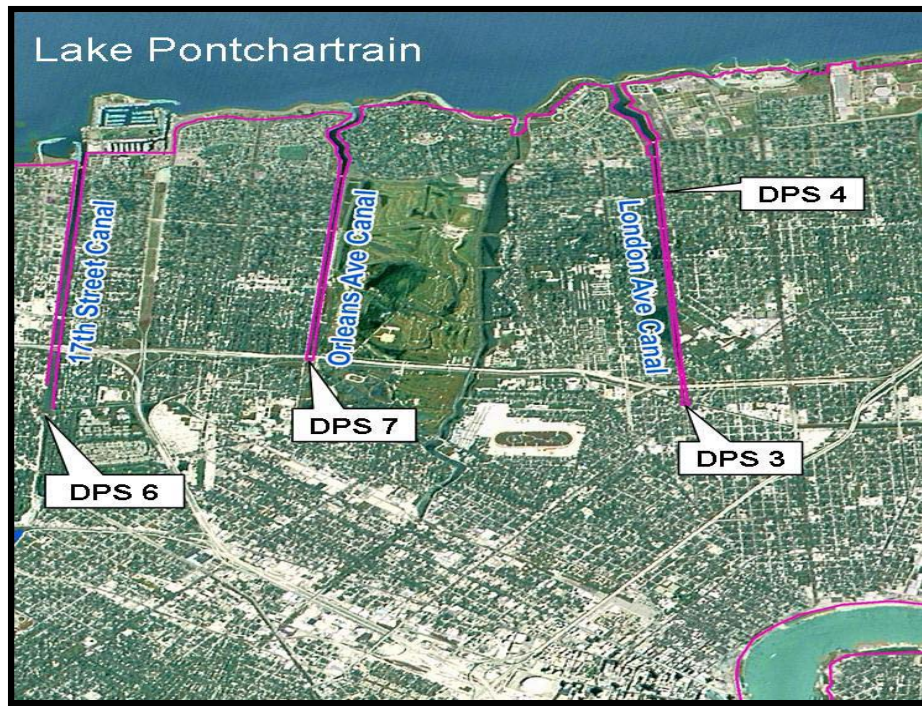


Building Strong



US Army Corps
of Engineers®

Individual Environmental Report (IER) #5 Permanent Protection System for the Outfall Canals



Purpose and Need

Protect City of New Orleans and Jefferson Parish from storm surge-induced flooding through the 17th St, Orleans Ave, and London Ave Canals, while not impeding the ability of the area's internal drainage system to remove stormwater.



US Army Corps
of Engineers®

Site Alternative Evaluation Criteria

- Reliability/Risk
Storm load exposure, number of transitions, operations & maintenance
- Constructability
Space restrictions, traffic impacts
- Real Estate
Timeframe associated with acquiring property
- Costs – Construction & Real Estate
Total cost for constructing the pump station and flood protection system
- Natural Environmental Impacts
Threatened & endangered species, water quality
- Land Use Impacts
Changes to existing land use, i.e. green space, residential, commercial

17th Street Proposed Action

Site Location A: Maximum Footprint





US Army Corps
of Engineers®

Orleans Ave Proposed Action

Site Location B: Maximum Footprint





US Army Corps
of Engineers®

London Ave Proposed Action

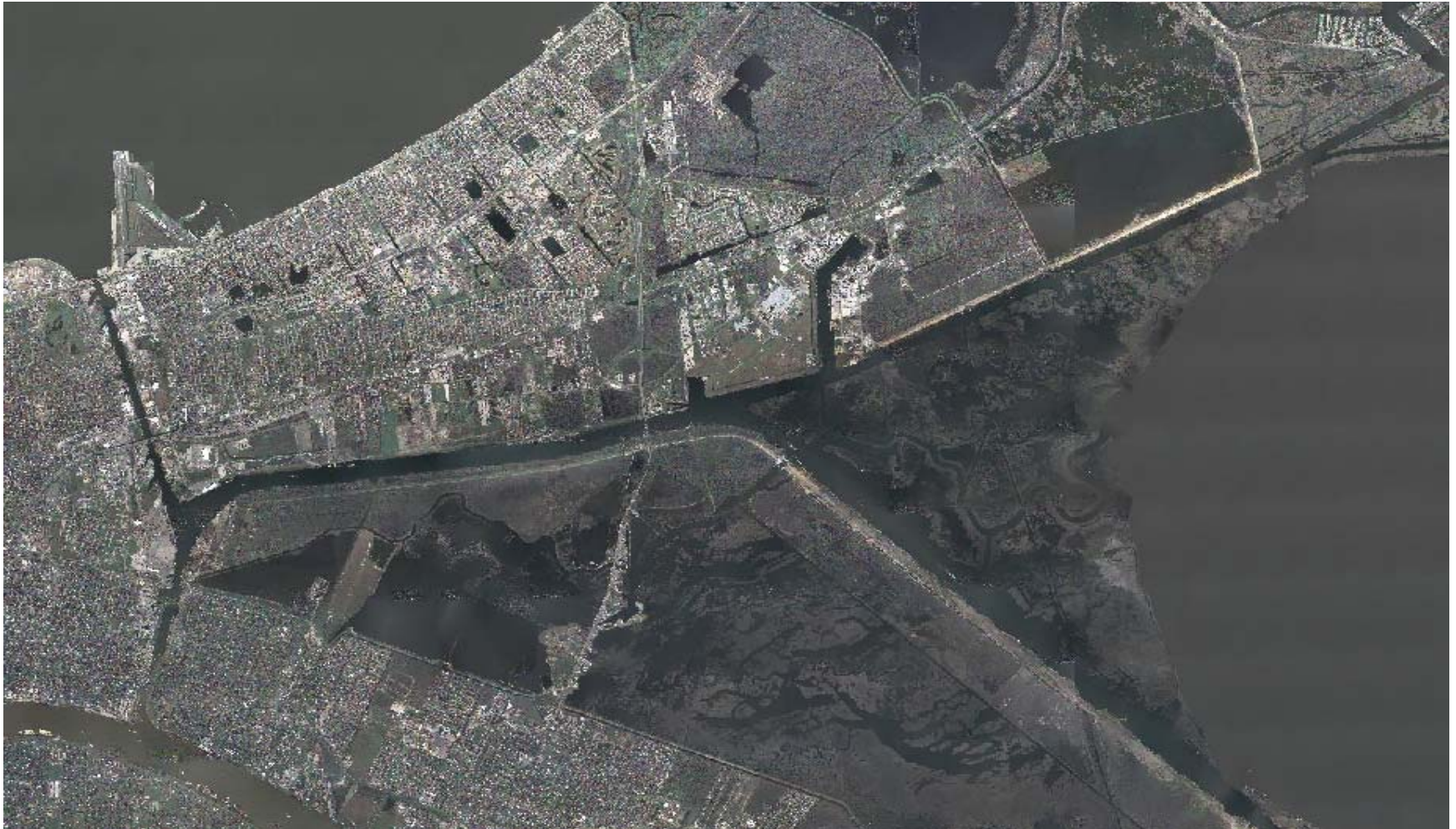
Site Location C: Maximum Footprint





US Army Corps
of Engineers®

Improving Hurricane Protection on the Inner Harbor Navigation Canal IER 11 Tier 2 Borgne

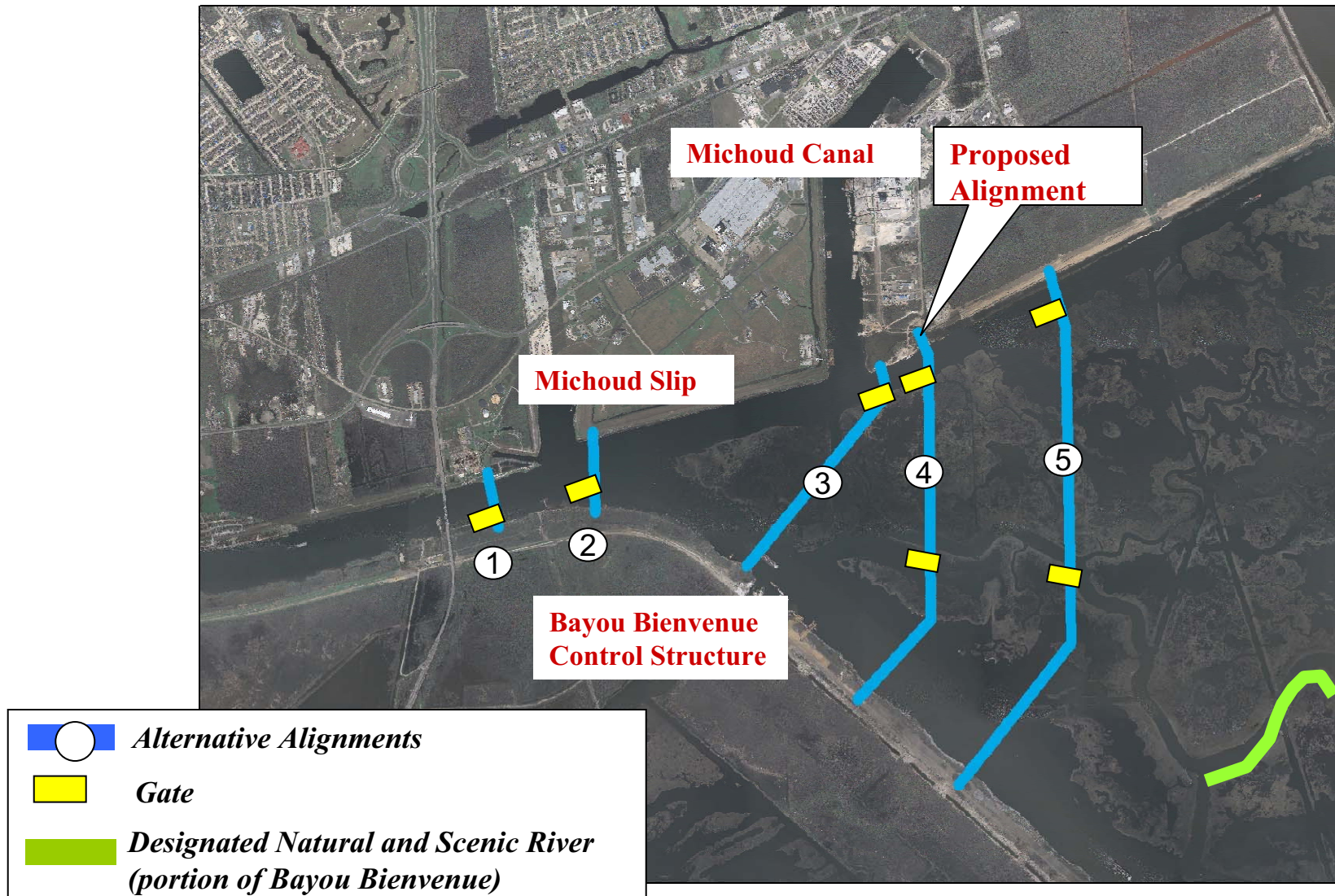




US Army Corps
of Engineers®

IER #11 Tier 2 Borgne

Alternative Alignments Overview

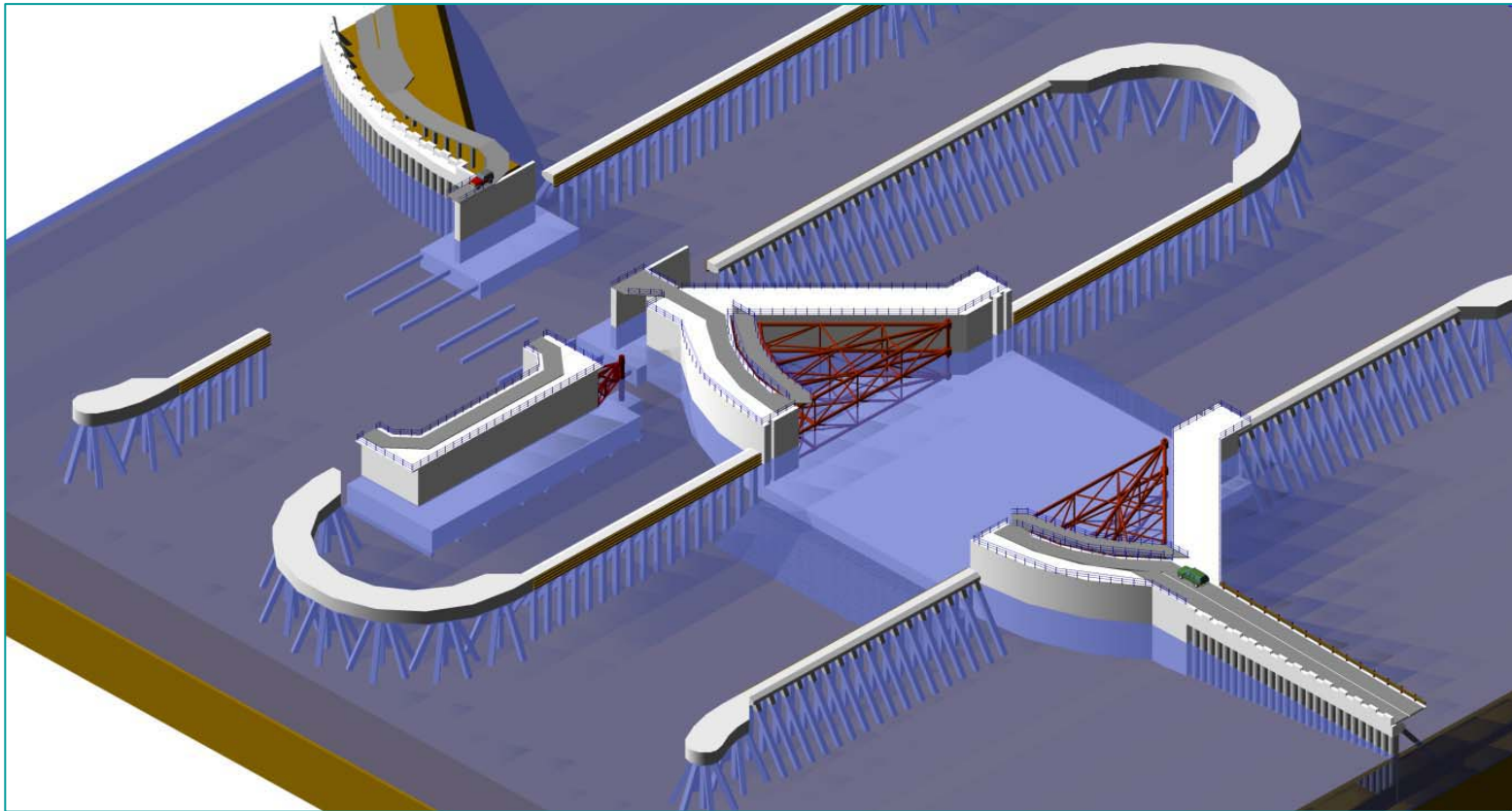


Building Strong



US Army Corps
of Engineers®

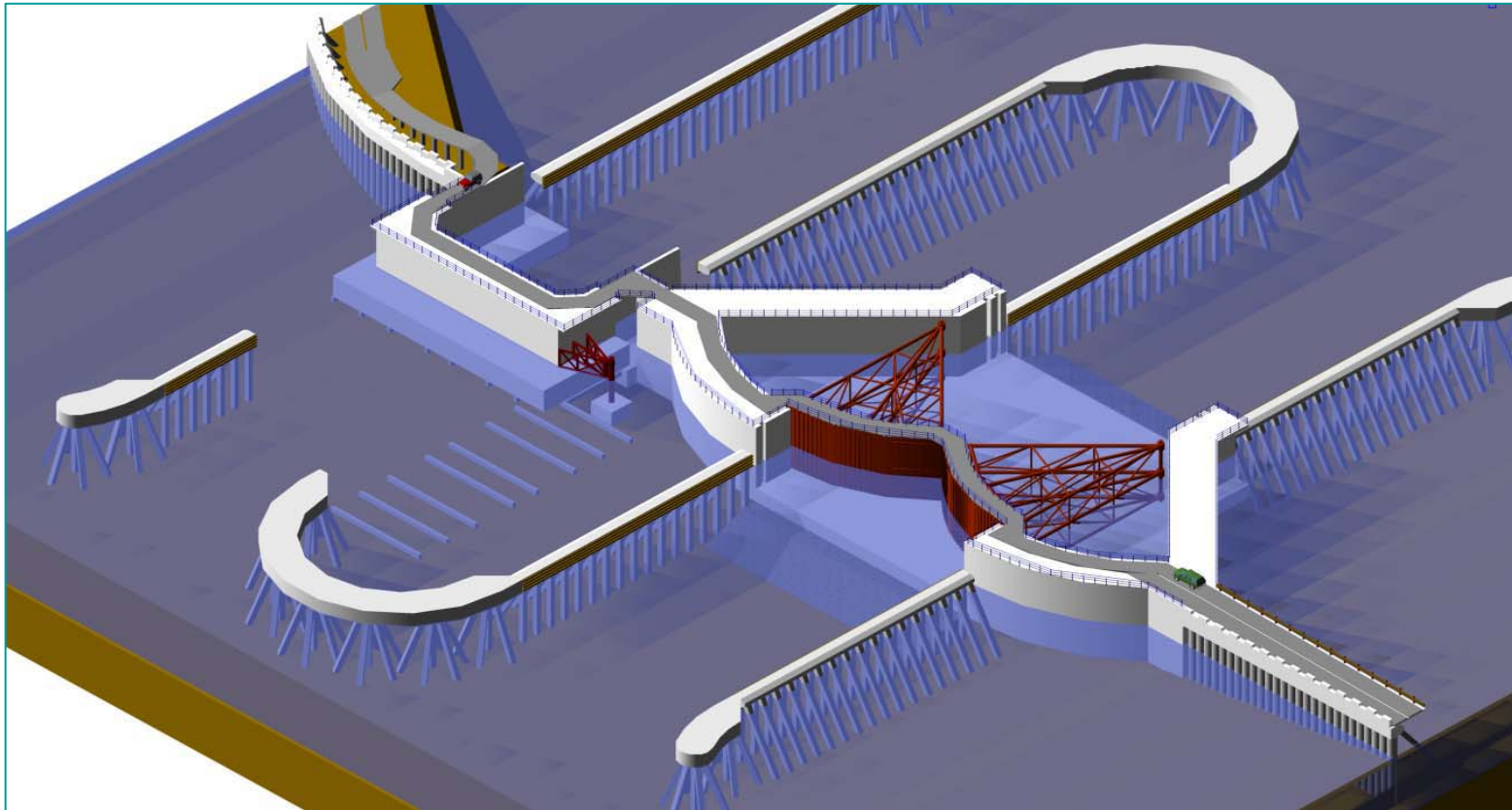
GIWW Sector Gate – Bypass Open





US Army Corps
of Engineers®

GIWW Sector Gate – Bypass Closed

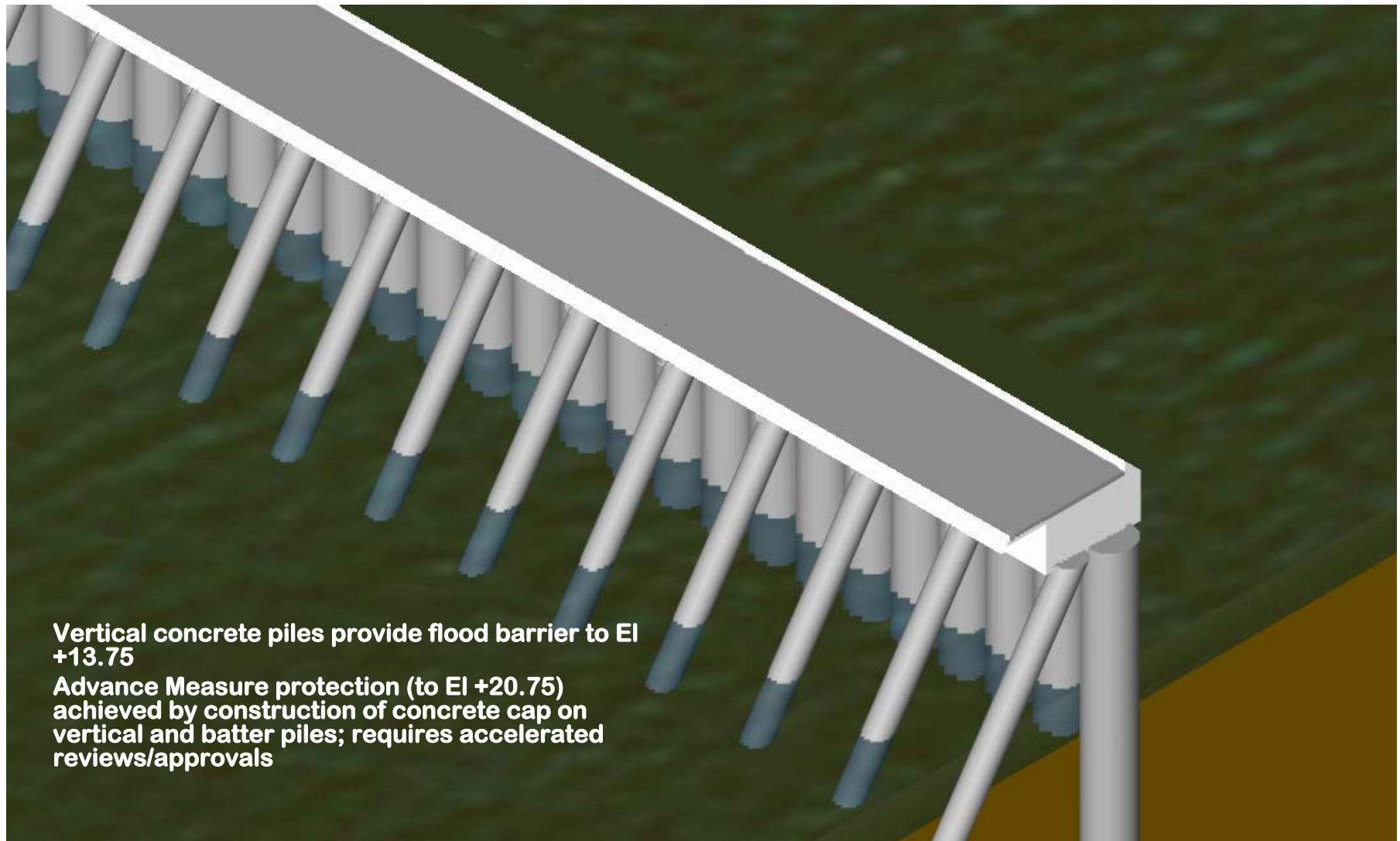




US Army Corps
of Engineers®

Barrier Wall

Advance Measures Case

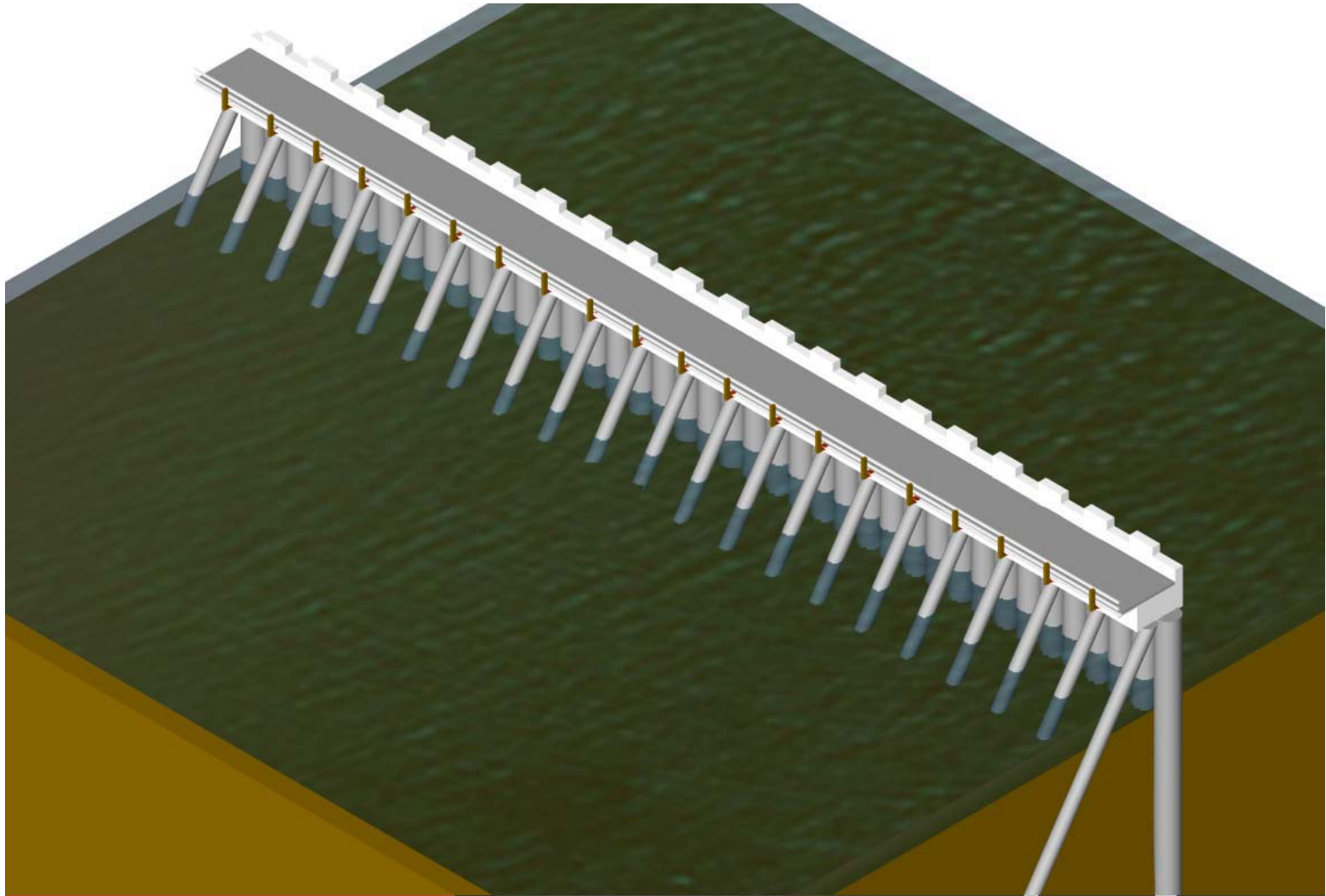


Building Strong



US Army Corps
of Engineers®

Barrier Wall Final Protection

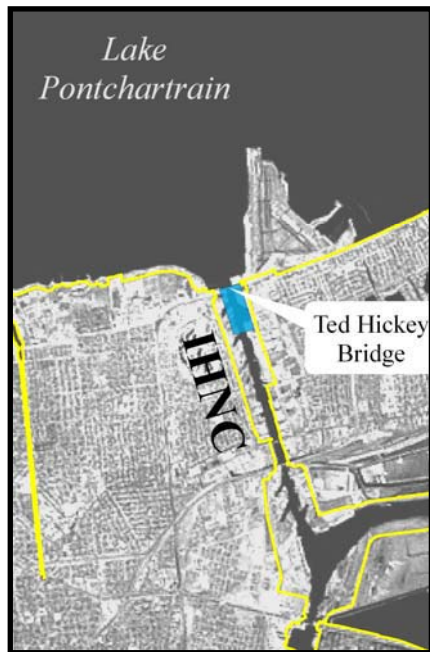


Building Strong



US Army Corps
of Engineers®

Location Pontchartrain 2



Exact location to be
determined within the
Pontchartrain 2 area

Seabrook Gate

Structure Concept





US Army Corps
of Engineers®

Opportunities for Public Input

- Monthly Public Meetings throughout New Orleans Metro Area
 - Make sure to sign in tonight to get on our meeting notification mailing list
- Comments can be submitted at any time at
- Individual Environmental Reports (IER) 30-day Public Review www.nolaenvironmental.gov

**Questions and comments regarding Hurricane Protection Projects
should be addressed to:**

Gib Owen

PM-RS

P.O. Box 60267

New Orleans, LA 70160-0267

Telephone: 504-862-1337

E-mail: mynenvironmental@usace.army.mil

Building Strong





US Army Corps
of Engineers®

USACE Web Site

<http://www.mvn.usace.army.mil>

[ABOUT US](#) [SERVICES](#) [BUSINESS](#) [CAREERS](#) [REFERENCES](#) [PRESS ROOM](#) [CONTACT US](#) [LINKS](#)



New Orleans District

Floodwalls

Building them bigger, stronger, better
The U.S. Army Corps of Engineers is continuing to work expeditiously to complete the Hurricane and Storm Damage Risk Reduction System (HSDRRS) by 2011. To this end, the Corps is using valuable lessons learned to construct more resilient levees and floodwalls.

[See for yourself >>](#)




PUBLIC INFORMATION

Hurricane & Flood Risk Reduction
[Learn more about what the Corps is doing to reduce risk here>>](#)

Emergency Information
[Road Closures, Disaster Recovery, Parish Information and More>>](#)

Nola Environmental
Did you miss a meeting? No problem! Find presentations, summaries and [More>>](#)



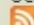
TOP HEADLINES

[document confirming action on Westwego t Harvey](#)

[Corps releases environmental document fo public review](#)

[Corps to provide update on Westbank risk reduction projects](#)

[Corps Seeks Industry Input on Design and Construction Techniques for Westbank](#)

Scroll: [Faster](#) | [Slower](#) | [Off](#)
 [RSS](#) (What is RSS?)

ASK THE CORPS


The Corps wants to hear from you!


Q. *Do you have information on the closing of Industrial Locks on August 1, 2008 for 60 days?*

A. *Yes, for information regarding the August 1st closing of the Inner Harbor Navigation Canal Lock, [please click here.](#)*

Submit questions or comments to askthecorps@usace.army.mil.

FEATURED VIDEOS

**West Closure Complex**
Learn more about the alternatives under consideration to reduce risk on the Westbank. [Watch >>](#)

**Hurricane & Storm Damage Risk Reduction System**
From levees to pumping stations, [find out more](#) about system features.

9/9/2008 [DISCLAIMER](#) [PUBLIC INQUIRIES](#) [PRIVACY AND SECURITY](#) [FOIA](#) [INFORMATION QUALITY ACT](#) [ACCESSIBILITY](#)